

Infty Editor – A Mathematics Typesetting Tool with a Handwriting Interface and a Graphical Front-End to OpenXM Servers

Mitsushi Fujimoto

Department of Information Education

Fukuoka University of Education*

Toshihiro Kanahori

Research Center on Educational Media

Tsukuba College of Technology[†]

Masakazu Suzuki

Faculty of Mathematics

Kyushu University[‡]

1 Introduction

Infty Editor is a editor with on-line recognition of handwritten mathematical expressions, which was developed by our research group ([2]). In this handwriting interface, as soon as a character is written, it is rewritten by neat strokes in an appropriate position and size automatically. In the interior of Infty Editor it is used the XML format as the data format of the written mathematical expressions. Infty Editor also supports the inputs and outputs of \LaTeX and MathML format.

OpenXM(Open message eXchange protocol for Mathematics) is a communication protocol for various computer algebra systems. At present, the mathematical softwares that support OpenXM are Asir, Mathematica, gnuplot, kan/sm1, phc, TiGERS and Macaulay2. It is efficient to combine existing useful systems than to build all functions on one system. Most of computer algebra systems have original programming languages. Those are not compatible each other, however, using OpenXM one can access various systems by one language. Further, OpenXM provides parallel and distributed computation since target systems can play as servers and clients.

We added OpenXM translator and communication controller to Infty Editor, so that one can execute calculations for mathematical expressions inputted by handwriting using OpenXM servers. In this paper, we describe the detail of the implementation, and introduce new functions of our system.

*fujimoto@fukuoka-edu.ac.jp

†kanahori@k.tsukuba-tech.ac.jp

‡suzuki@math.kyushu-u.ac.jp

2 A Handwriting Interface

Users of Infty Editor can input mathematical expressions by handwriting using a mouse or a tablet in the following window (Figure 1). We call this window Infty Handwriting Input Pad. As soon as a character is written, it is recognized and rewritten by neat strokes in an appropriate size and position automatically. By this rewriting, users can identify each recognition error immediately when it occurs, and can correct it easily. Pushing the button 'Execute', the expression is analyzed, and the result is pasted on the editing area in Infty Editor.

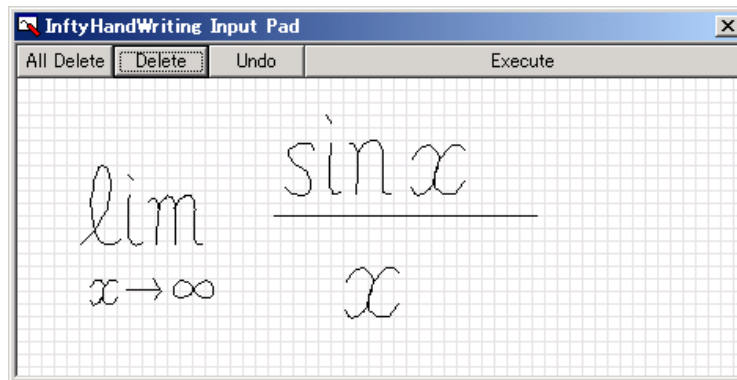


Figure 1: Infty Handwriting Input Pad

This automated rewriting method improves the accuracy of the structure analysis of the written mathematical expressions. The detail of the algorithms for character recognition is described in [3].

3 Infty XML Format Samples

Here, we introduce the XML format for mathematical expressions in Infty Editor. First sample is a polynomial $x^3 - y^2$.

```
<MathBlock>
  <MathUnit italic="1">
    x
    <MathLink type="RSUP">
      <MathUnit>3</MathUnit>
    </MathLink>
  </MathUnit>
  <MathUnit>&minus;</MathUnit>
  <MathUnit italic="1">
    y
    <MathLink type="RSUP">
      <MathUnit>2</MathUnit>
    </MathLink>
  </MathUnit>
</MathBlock>
```

</MathBlock>

The top tag is MATHBLOCK. x^3 is enclosed by a tag MATHUNIT, The exponent 3 is also enclosed by MATHUNIT and a tag MATHLINK with a type RSUP. The entity `−` which means ‘-’ is also enclosed by MATHUNIT. Second sample is a fraction $\frac{5}{x}$.

```
<MathBlock>
  <MathUnit>&frac;
    <MathLink type="UPPER">
      <MathUnit>5</MathUnit>
    </MathLink>
    <MathLink type="UNDER">
      <MathUnit italic="1">x</MathUnit>
    </MathLink>
  </MathUnit>
</MathBlock>
```

The entity `&frac;` which means a fraction is enclosed by MATHUNIT. The numerator is expressed by MATHLINK with a type UPPER. The denominator is by MATHLINK with LOWER.

As the above examples show, the Infty XML format has not semantic structures of mathematical expressions. It is only for printing and previewing.

4 Communication with Computer Algebra Systems

The previous version (Ver.1) of Infty Editor could communicate with Mathematica using MathLink ([5]). In the current version (Ver.2), we planned to build the environment to use various computer algebra systems including Mathematica from Infty Editor.

However, the following differences make it difficult: (1) Each of computer algebra systems has own user interface. (2) Notations of mathematical expressions are different. (3) They use different function names, command names and user languages. (4) Some of them have communication function, and the others have not.

Thus, we needed infrastructure for mathematical software systems. Then, we adopted OpenXM. OpenXM is the specification which defined the communication protocol and the communication model in order to absorb the difference among various computer algebra systems ([4]).

Advantages of OpenXM are the following: (i) New system can be constructed by assembling different OpenXM servers. (ii) Functions can be added using a language on a favorite system. (iii) Distributed computations and competitive computations are possible. (iv) Since shutdowns of OpenXM servers release memories, the increase of memory can be controlled. (v) The development of a system can be distributed.

The URL of the OpenXM official web page is <http://www.openxm.org/>. It is provided not only the specification of communication protocol for OpenXM but also packages of mathematical software systems supporting OpenXM. Further, the head branch of sources is available from the anonymous CVS server. However, the sources distributed are for UNIX platforms.

5 Implementation of Communication Function

First, we prepared the binaries of OpenXM servers for Windows platform. Target systems are Mathematica, Asir, phc, gnuplot. The sources of these wrappers or patches provided by OpenXM project are for UNIX platforms. Therefore, we used Cygwin (see <http://cygwin.com/>), which is a UNIX environment including GNU C compiler and runtime DLLs for Windows, in order to creating their Windows binaries. The main OpenXM server for Infty Editor is Asir. Other OpenXM servers are called through Asir. The communication function of Infty Editor is provided as Windows Dynamic Link Libraries (DLL). It consists of Infty-Asir translator, OpenXM communication controller and a dialog box, which is used in order to execute calculations and to obtain the results.

Figure 2 expresses computing processes. The left side is for Infty Editor. The right side is for OpenXM servers. The inputted data is converted to the Asir string. It is transmitted to Asir by OpenXM protocol. Asir computes it (using other OpenXM servers if required), and converts the computation result to the Infty XML format. It is transmitted to Infty Editor and outputted in the dialog box. User pastes it on Editor.

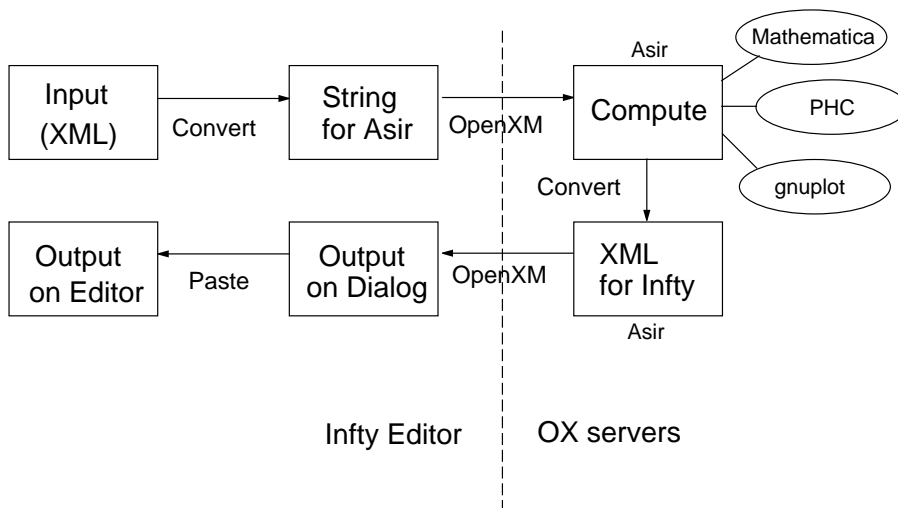


Figure 2: Computing Processes

The software environment required is as follows:

OS	Windows 2000 or Windows XP
Editor	InftyED2.exe
Cygwin	cygwin1.dll, etc
OX launcher	ox.exe
OpenXM server	Asir(ox_asir), Mathematica(ox_math), etc
X server	XFree86

At present, since gnuplot called from Infty Editor is for X-window, X server is required when users execute gnuplot or ox_plot.

6 Available Functions

Currently available computation functions are as follows:

- Evaluate (Asir)
- Summation (Asir)
- Expand (Asir)
- Factorize (Asir)
- Differentiate (Asir)
- Integrate (Mathematica)
- Solve
 - Equation (Mathematica)
 - System of Equations (phc)
- Plot
 - Explicit function (gnuplot)
 - Implicit function (ox_plot)

After choosing a mathematical notation, users can send it to OpenXM servers by choosing a computing command from the calculation menu in the dialog box (Figure 3).

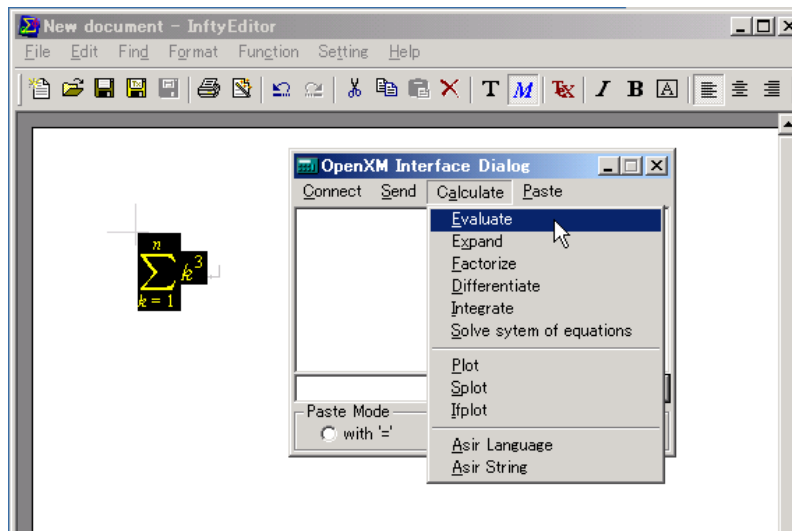


Figure 3: Calculate Menu

Then, the result is displayed within the dialog box (Figure 4). The pastes of calculation results into Infty Editor are performed from the paste menu in the dialog box. There are three paste mode. First mode is the paste with the equal symbol '=' (With '=' Mode). Second is with line feed (With LF Mode).

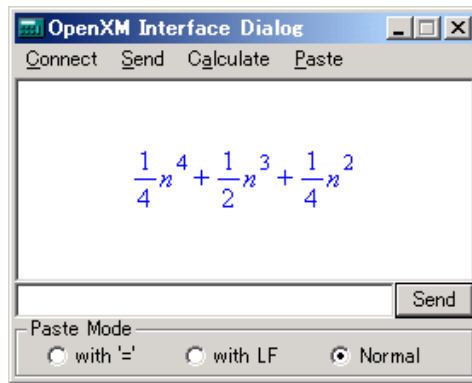


Figure 4: OpenXM Dialog Box

Another one is the paste of calculation results only (Normal Mode). Furthermore, users can choose auto paste mode by a maximize/minimize button.

Figure 5 is a screen shot of Infty Editor.

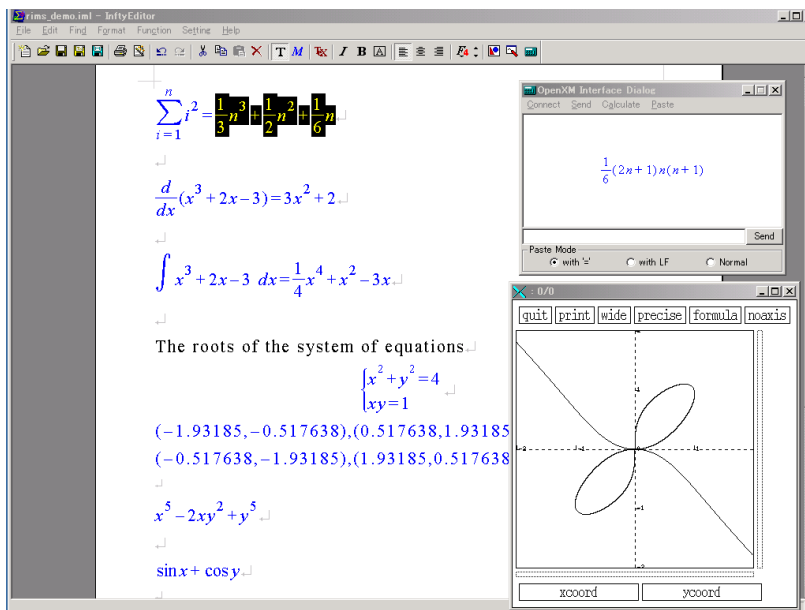


Figure 5: Screen Shot

7 Support of Asir User Language

Asir user language is a programming language just like C language. Type declarations of variables are unnecessary, and lists are available for data objects.

On Infty Editor, users can define new functions by using Asir user language, and use them. The following is an example of a function which calculates the sum from 1 to N by Asir user language.

```

def sum(N){
  R=0;
  for(I=1;I<=N;I++)
    R=R+I;
  return R;
}

```

What is needed in order to define the new function 'sum' is to choose 'Asir language' from the calculation menu of the dialog box.

It is also possible to send Asir commands directly. There are two methods for sending Asir commands. One is the method choosing 'Asir string' from the calculation menu of the dialog box. In this case, users get the plain strings which Asir returns (Figure 6).

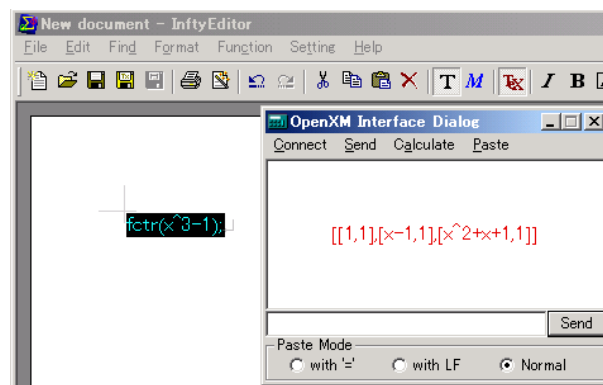


Figure 6: Execution of Asir String

Another one is the method inputting Asir commands in the small window (Asir String Box). In this case, the calculation result is converted to the Infty XML format as much as possible (Figure 7).

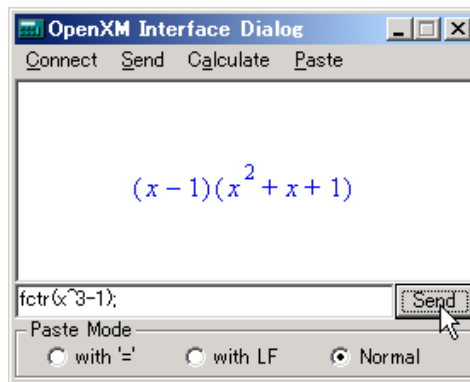


Figure 7: Asir String Box

8 Conclusion and Further Work

We linked Infty Editor, which has a handwriting interface, to various computer algebra systems using OpenXM. Three paste modes for computation results were also prepared in consideration of various scenes creating documents. Further, we supported a programming by Asir user languages. As a consequence, users don't have to learn complex commands and operations in cases of inputting and computing for mathematical expressions. Moreover, if users have knowledges of the first step about C language, they can do a programming for other computer algebra systems, for example Mathematica, through Asir from Infty Editor.

First author is also a member of the committer team of OpenXM, and it can be said that Infty Editor is a graphical front-end to OpenXM servers. Advantages of Infty Editor to other systems are with a handwriting interface, linking functions to various computer algebra systems, and a programming function.

The following are raised as further works: (1) Preparing Windows binaries of `ox_plot` and `gnuplot` which does not need a X server. (2) Addition of target softwares – MuPad, Maple, Gap, etc. (3) Optimization for Tablet PC. (4) Implementation for Linux and PDA. (5) Adopting standard common command names for mathematical operations proposed by [1].

9 How to get Infty Editor

Finally, we shall explain how to get Infty Editor. Infty Editor is a shareware, and one can download from <http://www.caisystem.co.jp/infty/eng/>. Additional DLLs for computing functions described in this paper are distributed by <http://www.fukuoka-edu.ac.jp/~fujimoto/files/>.

References

- [1] OpenMath Project, <http://www.openmath.org/>
- [2] Infty Project, <http://infty.math.kyushu-u.ac.jp/>
- [3] Kanahori, T., Tabata, K., Cong, W., Tamari, F., Suzuki, M.: On-Line Recognition of Mathematical Expressions Using Automatic Rewriting Method, *Advances in Multimodal Interfaces – ICMI2000*, pp. 394–401, Springer LNCS **1948**, 2000.
- [4] Maekawa, M., Noro, M., Ohara, K., Tamura, K.: The Design and Implementation of OpenXM-RFC 100 and 101, *Computer Mathematics, Proceedings of the Fifth Asian Symposium (ASCM 2001)*, pp. 102–111, World Scientific, 2001.
- [5] Okamura, H., Kanahori, T., Cong, W., Fukuda, R., Tamari, F., Suzuki, M.: A Handwriting Interface for Computer Algebra Systems, *Proceedings of the Fourth Asian Technology Conference on Mathematics*, pp. 291–300, ATCM, Inc., 1999.